

Yagi Antennas for SCADA Applications

Pulse/Larsen Yagi directional antennas are designed with strengthened aluminum alloys to assure long life and best performance for the most demanding applications. Units are ruggedized for continuous operation in the most extreme weather conditions. Solid aluminum elements provide superior signal radiation and broad bandwidth capabilities. Convenient “U” bolt mounting makes installation easy. All Yagis come with the Pulse One Year No-Nonsense warranty.

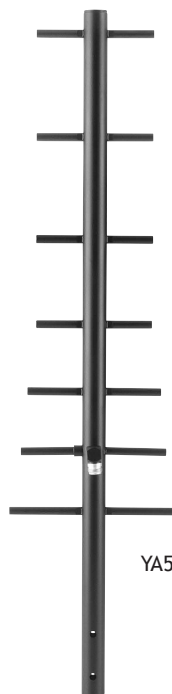
All Pulse/Larsen Yagis are a rugged, fully welded design. Yagis are built with a special N-Female connector that enables extra clearance for ease of weatherproofing.

YA3 series

- Frequencies from 406-470 MHz
- 5 elements
- 11 dBi gain

YA5 & 6 “W”

- Frequencies from 740-960 MHz
- 4 elements (YA6), 7 elements (YA5)
- 8 dBi (YA6) and 11 dBi (YA5) gain



Yagi Antennas for SCADA Applications

MODEL	FREQUENCY	CONNECTOR
YA3406WN	406 - 430 MHz	N Female
YA3450WN	450 - 470 MHz	N Female

SPECIFICATIONS	
GAIN	9 dBd / 11 dBi
TYPE	Five element welded
VSWR	1.5:1 maximum
POWER RATING	300 Watts
MAX LENGTH	42.25" - 406 MHz 36.25" - 450 MHz 35.25" - 470 MHz 34.25" - 490 MHz
VERTICAL BEAMWIDTH	53°
WIND LOAD	100 mph

MODEL	FREQUENCY	CONNECTOR
YA5740W	740 - 806 MHz	N Female
YA5800W	806 - 866 MHz	N Female
YA5825W	824 - 896 MHz	N Female
YA5900W	890 - 960 MHz	N Female

SPECIFICATIONS	
GAIN	9 dBd / 11 dBi
TYPE	Seven element welded
VSWR	2.0:1 maximum
POWER RATING	300 watts
MAX LENGTH	32.75"
VERTICAL BEAMWIDTH	45°
WIND LOAD	100 mph

MODEL	FREQUENCY	CONNECTOR
YA6740W	740 - 806 MHz	N Female
YA6800W	806 - 866 MHz	N Female
YA6825W	824 - 896 MHz	N Female
YA6900W	890 - 960 MHz	N Female

SPECIFICATIONS	
GAIN	6 dBd / 8 dBi
TYPE	Four element welded
VSWR	2.0:1 maximum
POWER RATING	300 watts
MAX LENGTH	17.5"
FEED CONNECTION	N Female
VERTICAL BEAMWIDTH	58°
WIND LOAD	100 mph

Worldwide Headquarters
12220 World Trade Drive
San Diego, CA 92128
USA
Tel 858 674 8100
Fax 858 674 8262

Larsen Brand Antennas
3611 NE 112th Avenue
Vancouver, WA 98682
USA
Tel 360 944 7551
800-268 3662 (USA)
Fax 360 891-0057
800 525 6749 (USA)

European Headquarters
Pulse GmbH & Co. KG
Zeppelinstrasse 15
Herrenberg
Germany
Tel +49 7032 7806 0
Fax +49 7032 7806 12

Asian Headquarters
B402, Shenzhen Academy of
Aerospace Tech Bldg
Tech-Innovation Internat'l
10th Kejinan Road
High Tech Zone
Nanshan District, Shenzhen
PR China
Tel 86 755 33966678
Fax 86 755 33966700

Pulse North Asia
3F, No. 198, Zhongyuan Rd
Zhongli City (32068)
Taoyuan Hsien
Taiwan (R.O.C.)
Tel 886 3 4356768
Fax 886 3 4356823

**Pulse (Suzhou) Wireless
Products Co, Ltd**
#99 Huo Ju Road
(#29 Bldg, 4th Phase)
Suzhou New District
Science & Tech Industrial Park
Jiangsu Province
Suzhou 215009 PR China
Tel 86 512 6807 9998
Fax 86 512 6809 8023