

# LTE, 4G, BROADBAND

## LTE, 4G, BROADBAND RADOME OMNIS

**NOTE: Radome Omni antennas have the following specifications:**

**Radome Enclosure:** Pultruded Fiberglass (UV Protected)

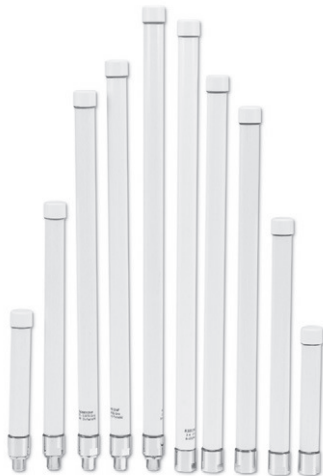
**VSWR:** 2.0:1

**Power Rating:** 20 Watts

**Ingress Protection:** IP67

**Polarization:** Vertical

**Suggested mounting brackets for N Female connectors are FB2BRACKET or FB3BRACKET. See Page 45 for FB brackets.**



Single Band Radome Omnis



RO806/2170NM

Model	Frequency (MHz)	Gain (dBd/dBi)	Length (In)	Connector
RO2404NM	2400-2500	1.9/4	11.5	N Male
RO2406NF	2400-2500	3.9/6	11.5	N Female
RO2406NM	2400-2500	3.9/6	11.5	N Male
RO2408NF	2400-2500	5.9/8	20	N Female
RO2408NM	2400-2500	5.9/8	20	N Male
RO2408NFD (downtilt)	2400-2500	5.9/8	20	N Female
RO2408NMD (downtilt)	2400-2500	5.9/8	20	N Male
RO2408NFU (uptilt)	2400-2500	5.9/8	20	N Female
RO2408NMU (uptilt)	2400-2500	5.9/8	20	N Male
RO4910NF	4940-4990	7.8/10	18	N Female
RO4910NM	4940-4990	7.8/10	18	N Male
RO5206NF	5150-5350	3.9/6	6.75	N Female
RO5410NF	5470-5725	7.8/10	16.5	N Female
RO5210NF	5150-5350	7.8/10	16.5	N Female
RO5210NM	5150-5350	7.8/10	16.5	N Male
RO5410NM	5470-5725	7.8/10	16.5	N Male
RO5805NF	5150-5825	2.8/5	6.75	N Female
RO5805NM	5150-5825	2.8/5	6.75	N Male
RO5806NF	5725-5875	3.9/6	6.75	N Female
RO5810NF	5725-5875	7.8/10	16.5	N Female
RO5810NM	5725-5875	7.8/10	16.5	N Male
RO806/2170NM	806-960 1710-2170	1.9/4 1.9/4	16.5	N Male

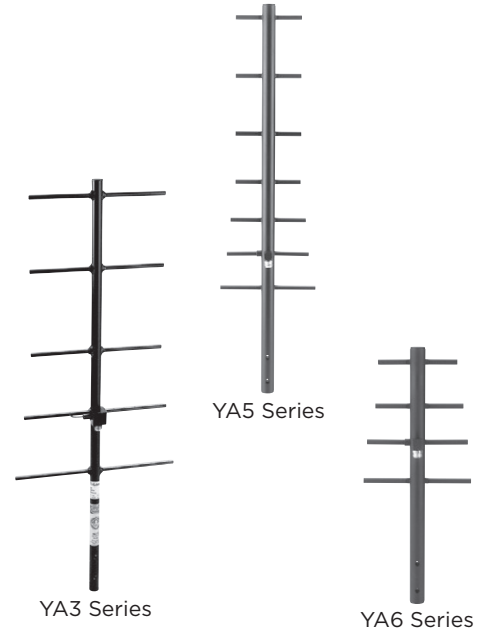
# BASE STATION ANTENNAS

## YAGIS

All Pulse/Larsen Yagis have the following specifications:

**Construction:** Fully Welded Elements      **Wind Load:** 100 mph  
**VSWR:** 2.0:1      **Feed Connection:** N Female  
**Power Rating:** 300 Watts      **Mounting Hardware:** Included

Model	# of Elements	Frequency (MHz)	Gain (dBd/dBi)	Length (In)
YA3406WN	5	406-430	9/11	42.25
YA3450WN	5	450-470	9/11	36.25
YA5740W	7	740-806	9/11	32.75
YA6740W	4	740-806	6/8	19.25
YA5800W	7	806-866	9/11	31.25
YA6800W	4	806-866	6/8	17.5
YA5825W	7	824-896	9/11	31.25
YA6825W	4	824-896	6/8	17.5
YA5900W	7	890-960	9/11	30
YA6900W	4	890-960	6/8	17.5



# BASE STATION ANTENNAS

## OMNI BASE STATION ANTENNAS

**Omni Base Station part numbers ending in “WA” do not include mounting hardware. All others include the appropriate FB2BRACKET or FB3BRACKET for mounting. See Page 45 for FB brackets.**

Model	Type	Frequency (MHz)	Gain (dBd/dBi)	Max Height (In)	Power Rating (Watts)	Whip Color	Feed Connection
BSA45C	Base Loaded 1/4 $\lambda$	45-50	0/2	51.75	200	Stainless	N Female
BSA118B	5/8 $\lambda$	118-121	3/5.2	64	200	Black	UHF Female
BSA132B	5/8 $\lambda$	131-135	3/5.2	54.5	200	Black	UHF Female
BSA150B	5/8 $\lambda$	144-174	3/5.2	51.75	200	Black	UHF Female
BSA150C	5/8 $\lambda$	144-174	3/2.5	51.75	200	Black	UHF Female
BSA220C	5/8 $\lambda$	200-225	3/5.2	33.75	200	Stainless	UHF Female
BSA406C	5/8 over 1/2 $\lambda$	406-420	3.5/5.6	32	200	Stainless	UHF Female
BSA440C	5/8 over 1/2 $\lambda$	440-460	3.5/5.6	32	200	Stainless	UHF Female
BSA450C	5/8 over 1/2 $\lambda$	450-470	3.5/5.6	32	200	Stainless	UHF Female
BSAKIT	Base Station Ground Plane Kit				200		UHF Female
FB1136	5/8 over 1/2 $\lambda$	136-230	3.5/5.6	96	200	Stainless	UHF Female
FB2406	5/8 over 1/4 $\lambda$	406-420	3.2/5.4	32.5	200	Black	N Female
FB2450	5/8 over 1/4 $\lambda$	450-470	3.2/5.4	32.5	200	Black	N Female
FB2406W/A	5/8 over 1/4 $\lambda$	406-420	3.2/5.4	32.25	200	Black	N Female
FB2420W/A	5/8 over 1/4 $\lambda$	420-440	3.2/5.4	32.25	200	Black	N Female
FB2450W/A	5/8 over 1/4 $\lambda$	450-470	3.2/5.4	32.25	200	Black	N Female
FB3800	5/8 over 1/4 $\lambda$	806-866	3.2/5.4	16	150	Black	N Female
FB3825	5/8 over 1/4 $\lambda$	824-896	3.2/5.4	16	150	Black	N Female
FB3740WA	5/8 over 1/4 $\lambda$	740-806	3.2/5.4	16	150	Black	N Female
FB3800WA	5/8 over 1/4 $\lambda$	806-866	3.2/5.4	16	150	Black	N Female
FB3825WA	5/8 over 1/4 $\lambda$	824-896	3.2/5.4	16	150	Black	N Female
FB35T800	5/8 over 5/8 over 1/4 $\lambda$	806-866	3.2/5.4	32	150	Black	N Female
FB35T825	5/8 over 5/8 over 1/4 $\lambda$	824-896	3.2/5.4	32	150	Black	N Female
FB35T800WA	5/8 over 5/8 over 1/4 $\lambda$	806-866	5/7.2	32	150	Black	N Female
FB35T825WA	5/8 over 5/8 over 1/4 $\lambda$	824-896	5/7.2	32	150	Black	N Female
FB900	5/8 over 1/4 $\lambda$	890-960	3.2/5.4	16	150	Black	N Female
FB3900WA	5/8 over 1/4 $\lambda$	890-960	3.2/5.4	16	150	Black	N Female
FB35T900	5/8 over 5/8 over 1/4 $\lambda$	890-960	5/7.2	23	150	Black	N Female
FB35T900WA	5/8 over 5/8 over 1/4 $\lambda$	890-960	5/7.2	23	150	Black	N Female
FB45T2400	5/8 over 5/8 over 1/4 $\lambda$	2400-2485	5/7.2	16.5	100	Black	N Female
FB45T2400WA	5/8 over 5/8 over 1/4 $\lambda$	2400-2485	5/7.2	9	100	Black	N Female

